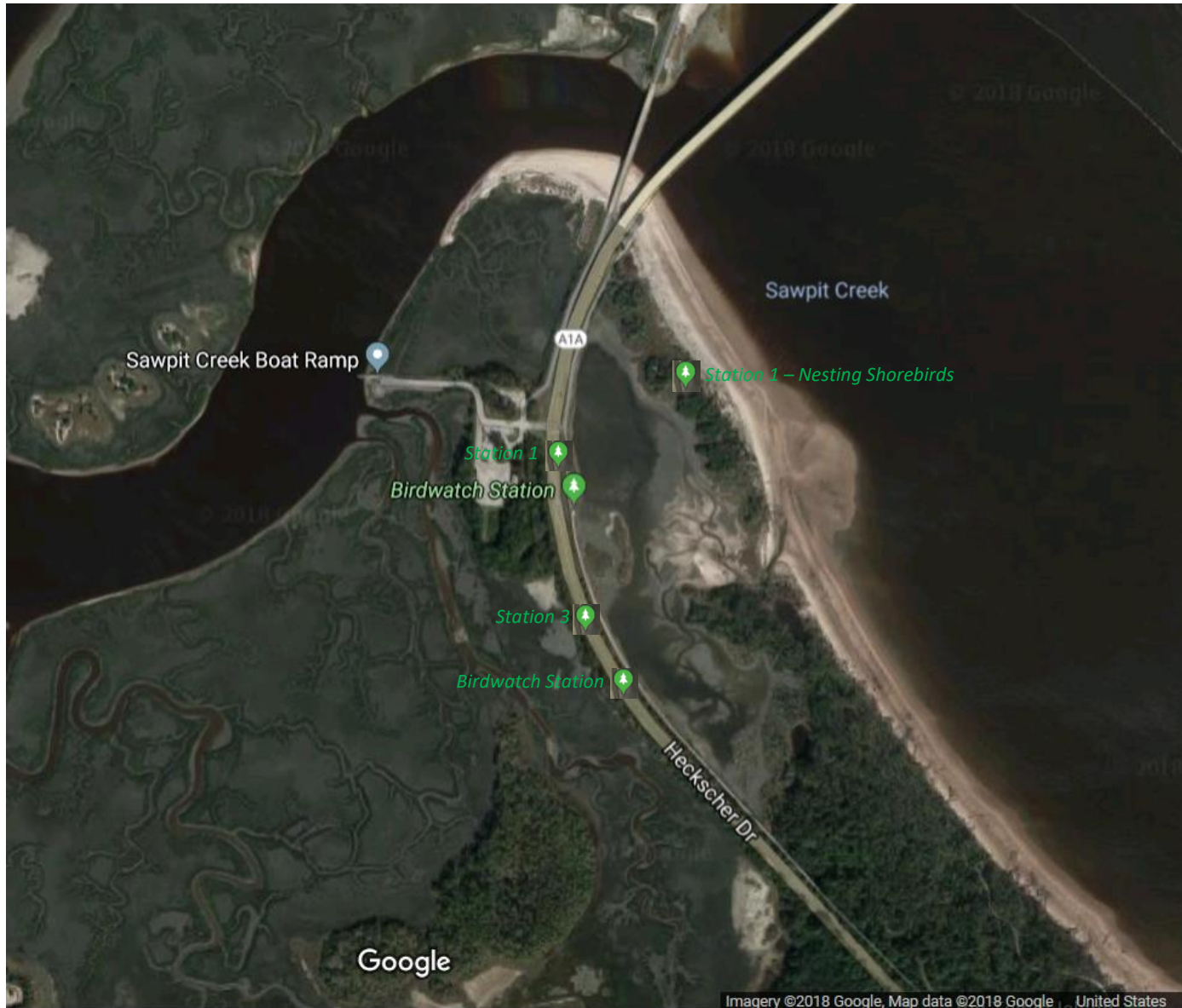


Spoonbill Pond Interpretative Project
Florida Master Naturalist Program
Coastal Systems Module



Lynda Bell, Terri Jenkins, Danielle
Laramie, Ron Pfeffer, and Nancy Roepke

Spoonbill Pond and Area Map



Likely Bird Sightings

Long-legged Waders:

Roseate Spoonbill, Wood Stork, Great Blue Heron, Little Blue Heron, Green Heron, Tricolored Heron, Snowy Egret, Great Egret, Reddish Egret

Gulls, Terns, & Skimmer:

Bonaparte's Gull, Laughing Gull, Royal Tern, Black Tern, Caspian Tern, Least Tern, Forster's Tern, Gull-billed Tern, Black Skimmer

Shorebirds:

White-rumped Sandpiper, Least Sandpiper, Spotted Sandpiper, Semi-Palmated Sandpiper, Piping Plover, Wilson's Plover, Black-bellied Plover, Willet, Sanderling, Killdeer, Dowitcher, Lesser Yellow Legs, Greater Yellow Legs, Black-necked Stilt, Whimbrel, Wilson's Phalarope, American Oystercatcher

Raptors:

Bald Eagle, Peregrine Falcon, Northern Harrier, Osprey, Black Vulture, Turkey Vulture, Red Shoulder Hawk, Cooper's Hawk, Swallow-tailed Kite

Waterfowl:

Red-breasted Merganser, Hooded Merganser, Mallard, Northern Shoveler, Green-winged Teal, Blue-winged Teal, Ruddy Duck, Mottled Duck, Lesser Scaup, Common Eider

Water Birds:

Horned Grebe, Common Loon, Red-throated Loon, American White Pelican, Brown Pelican, Double-crested Cormorant, Anhinga

Perching Birds:

Belted Kingfisher, Red-bellied Woodpecker, Carolina Chickadee, White-eyed Vireo, Eastern Towhee, Pileated Woodpecker, Yellow-throated Warbler, Seaside Sparrow, Saltmarsh Sparrow, Barn Swallow, Tree Swallow, Red Winged Blackbird

Station 1

Park at the Sawpit Creek Boat Launch Parking area and cross A1A using the marked cross-walk. Station 1 is at the beginning of the Boardwalk. This is the view of Spoonbill Pond gazing to the left.



Quickly scan the open water particularly for waterfowl that will move away as soon as they notice you.

Station 1

In the open water here you may see Hooded Mergansers as well as both Brown and White Pelicans.



Station 1

Watch overhead and along the shoreline for Tri-colored Herons, Roseate Spoonbills, and Wood Storks.



Station 1



Finally, look at the tall tree on the far side of the pond: Look closely with binoculars or a spotting scope at the bare branch left of the tree trunk. 1 or 2 adult Bald Eagles often can be seen perched here. If they're not there when you arrive, keep an eye out for them as you progress down the boardwalk.

Station 1 – Nesting Shorebirds

Before leaving Station 1, mention the beach opposite Spoonbill Pond and the Nesting Shorebirds that may be observed.



Wilson's Plover nest with 3 eggs
Picture: blog.catandturtle.net



Least Tern nest with 2 eggs and 1 hatched baby bird
Picture: fws.gov



Killdeer nest with 4 eggs
Picture: animalspot.net



Wilson's Plover adult and juvenile
Picture: blog.catandturtle.net



Least Tern male and female adults feeding young
Picture: blog.Nwf.org



Killdeer adult and juveniles
Picture: startribune.com

Station 2

Next, Station 2 is located at the first (northern) Bird Watching Platform. This station provides the closest proximity to many species. Plan on spending a good amount of time here.



Scan the edge of the island in the foreground for waterfowl, herons, egrets, and shorebirds. Scan the perches here for Belted Kingfishers and swallows. A spotting scope is helpful to see shorebirds on the exposed shoreline in the background.

Station 2

In this area you may see the Tricolored Heron feeding aggressively as well as Greater Yellowlegs and Black-necked Stilt.



Station 2

Pictured is some of the vegetation you should expect to see. Look for examples to point out on the road side of the boardwalk.



Salt Brush



Sorrel



Virginia Creeper

Review the common name and scientific name as often as you can.

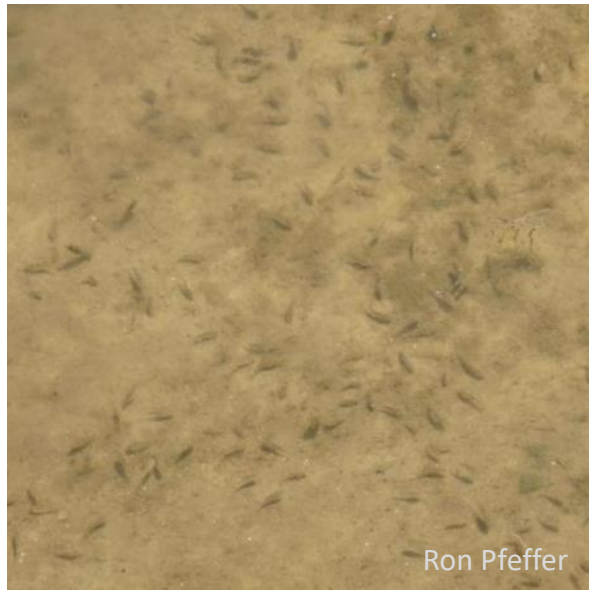
Station 2

Station 2 is a good spot to observe the effect of salt stunt on vegetation. Notice the limited height of plants in the foreground.



Ron Pfeffer

Station 2 and 3



Ron Pfeffer

Small Fish - various



Ron Pfeffer

Blue Crab – Hiding



Ron Pfeffer

Fiddler Crab

Pictured is some of the marine life you should expect to see. Look for examples to point out on the pond side of the boardwalk as you look over the rail into the area directly adjacent to the boardwalk.

Station 3

Station 3 is 150' south of the first Bird Watching Platform. It affords a view of the south end of the island seen from Station 2.



Take the time to scan the shoreline and open water here. You never know what you'll see and hear.

Station 3

Blue-winged Teal can be identified by the light colored crescent on their otherwise nondescript heads. The Belted Kingfisher may be seen perching and fishing in this area.



Station 3

Watch for Bonaparte's Gull and Lesser Yellowlegs. Pictured here are an immature Bonaparte's Gull and a pair of Lesser Yellowlegs.



Station 4



Station 4 is the second (Southern) Bird Watching Platform. It provides a good view of both the open water and the far shoreline at this end of the pond. Look for the Bald Eagle mentioned previously as well as Osprey perched high up in the trees on the far side. Great Egrets and other herons/egrets roost lower in the trees. Wood Storks may be seen standing on the far bank.

Summary

The combination of ease of access and exceptional bird diversity make this a not-to-be-missed birding hotspot.

For further information, please see:

<https://sites.google.com/site/daileybirdtrax/locations/spoonbill-pond>

<https://ebird.org/hotspot/L1125706>

<http://www.audubon.org/bird-guide>

